

FMARTK

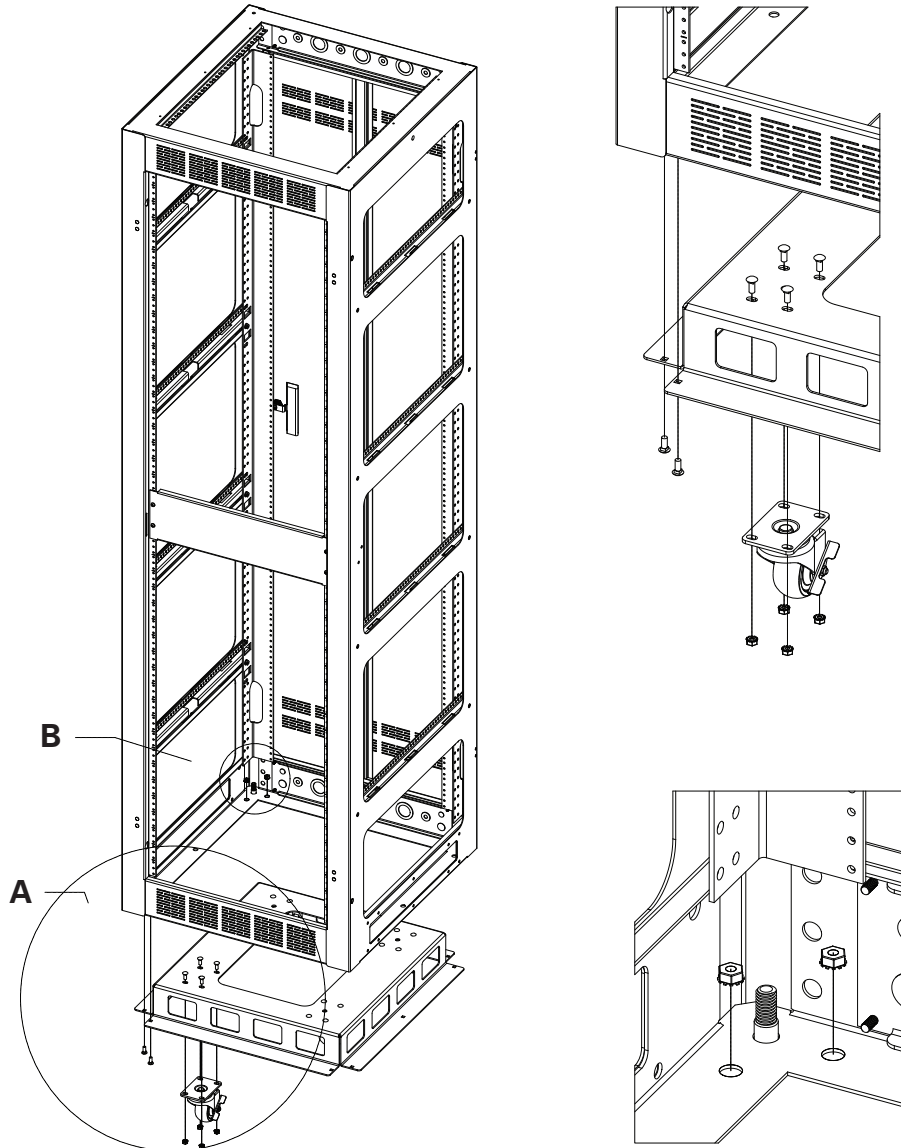
Caster Tray Kit for FMA Series Cabinets

Installation Instructions

1. It is best to install the caster kit on an unloaded cabinet.
2. Carefully lay the cabinet on its side.
3. Locate the (4) caster installation points on the metal truck bracket.
4. Each caster mounts to the inside skirt of the metal truck bracket.
5. Use sixteen (16) of the provided 1/4-20 x 0.625" carriage bolts and 1/4-20 KEPS nuts to attach each caster.
6. Fit the metal truck bracket to the bottom of the cabinet.
7. Use ten (10) of the provided 1/4-20 x 0.625" carriage bolts and 1/4-20 KEPS nuts to attach the assembly to the cabinet. Make sure the head of the carriage bolt on the outside of the cabinet and the nut will be on the inside of the cabinet.

Note: Interference could exist between racked-equipment and caster. See Initial Rail Setup section before proceeding.

Caution: Tall rack cabinets are not stable during any transport and the cabinet can easily fall over. This condition can be worse with the equipment and weight within the rack. Do not move a loaded cabinet on a caster kit. Take great care with moving an unloaded cabinet on a caster kit. Please use an appropriate number of people or appropriate equipment to safely handle the weight. The FMA Caster Kit capacity is 880 lbs.



Detail A
Scale 1:6

Detail B
Scale 1:3