

ASP-MG24 / ASP-MG24TDB

Quick Start Guide

Introduction

The AtlasIED ASP-MG24 is a 2 input by 4 output digital loudspeaker management system and sophisticated sound masking generator designed for fixed sound installation markets. The ASP-MG24 features the latest in available technology utilizing a 32 bit (40 bit extended) floating point processors and high performance 24 bit analog converters. Both balanced mic / line inputs have full DSP and are routable to any combination of the 4 outputs plus 4 discreet masking generators with full DSP, again routable in any output configuration.

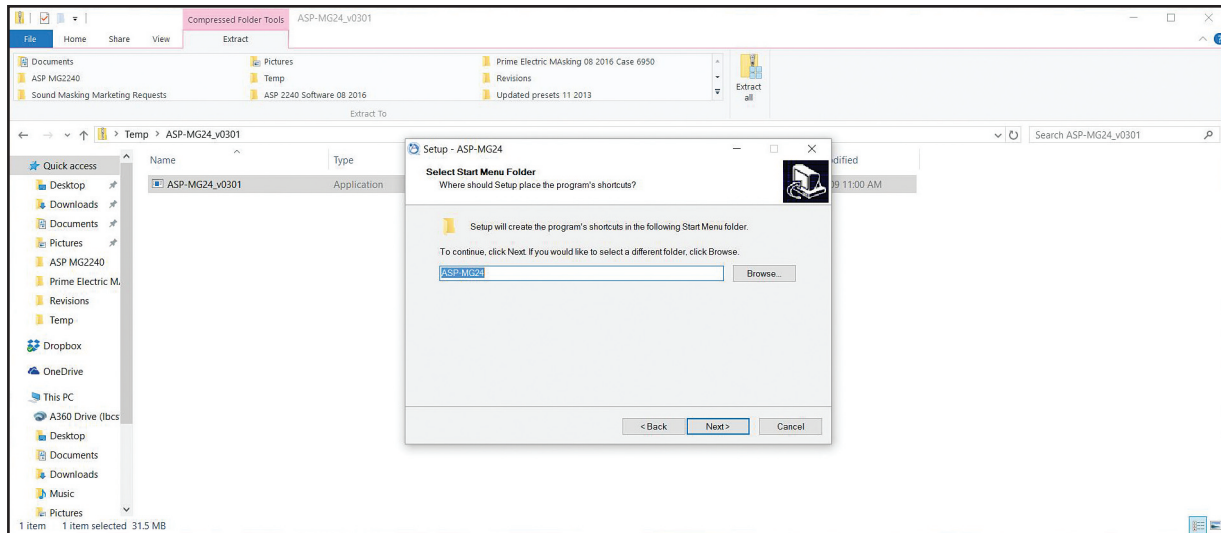
Control parameters include I/O gain, delay, polarity, 8 band parametric and 20 GEQ, adjustable crossovers, white / pink noise, adjustable compressor and hard limiters. Real time control is via the intuitive PC GUI, accessed via the USB or RS-232 interfaces.

Software and firmware are easily upgradable to keep the unit current. Option masking scheduler, initial ramp commission and network control is available on the ASP-MG24TDB.

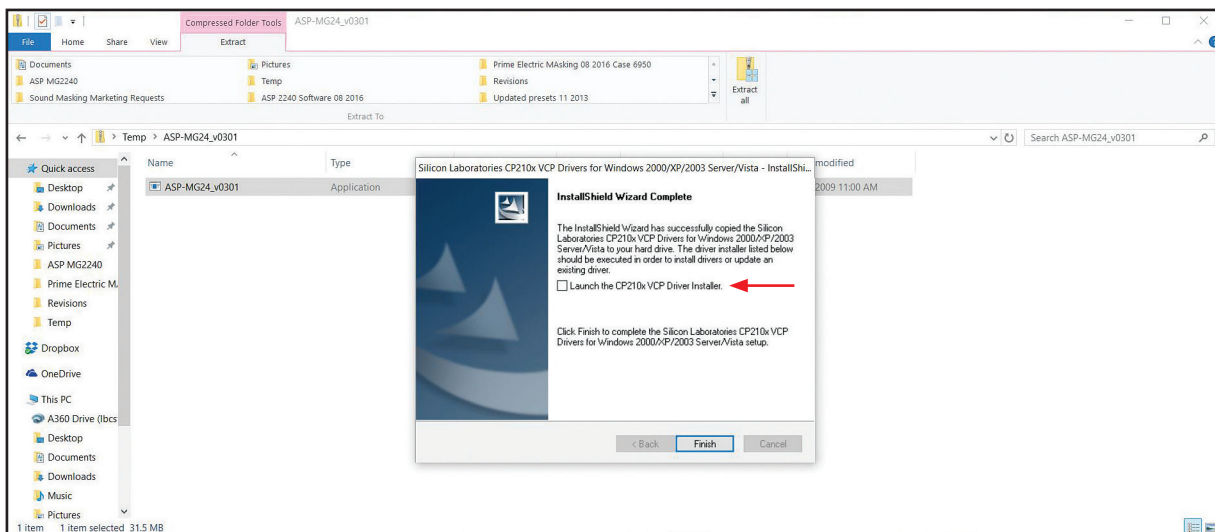
Loading the Software

The control software (ASP-MG24_v3.01) must be installed on a PC prior to connecting to the ASP-MG24.

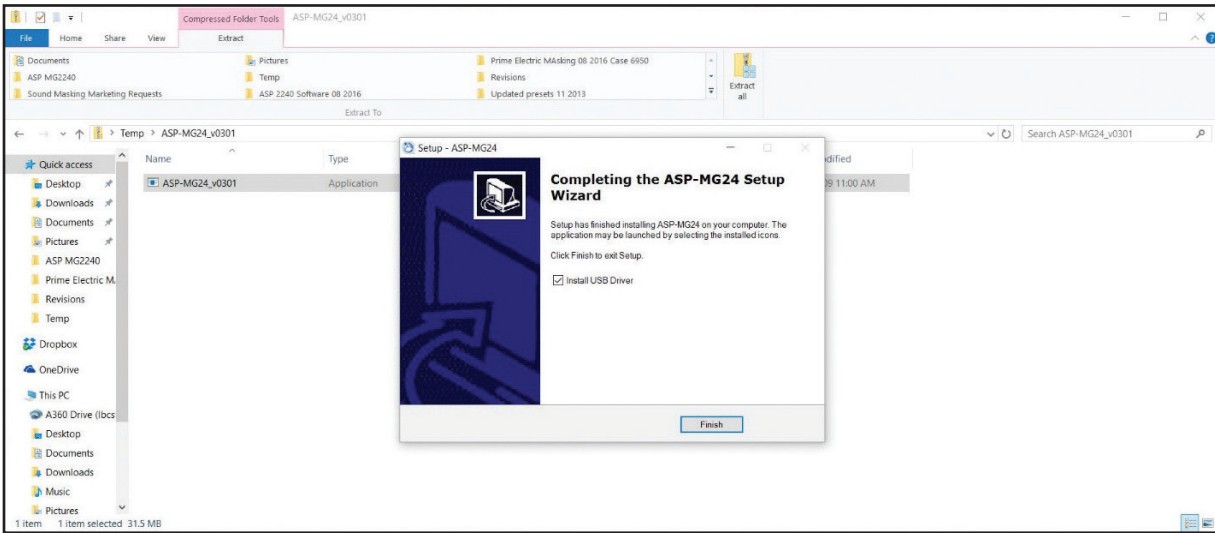
1. From the included disc or USB storage device, download the ASP-MG24_v3.01 application file to the desktop and unzip if compressed.
2. Click on the file to start the Install Wizard.



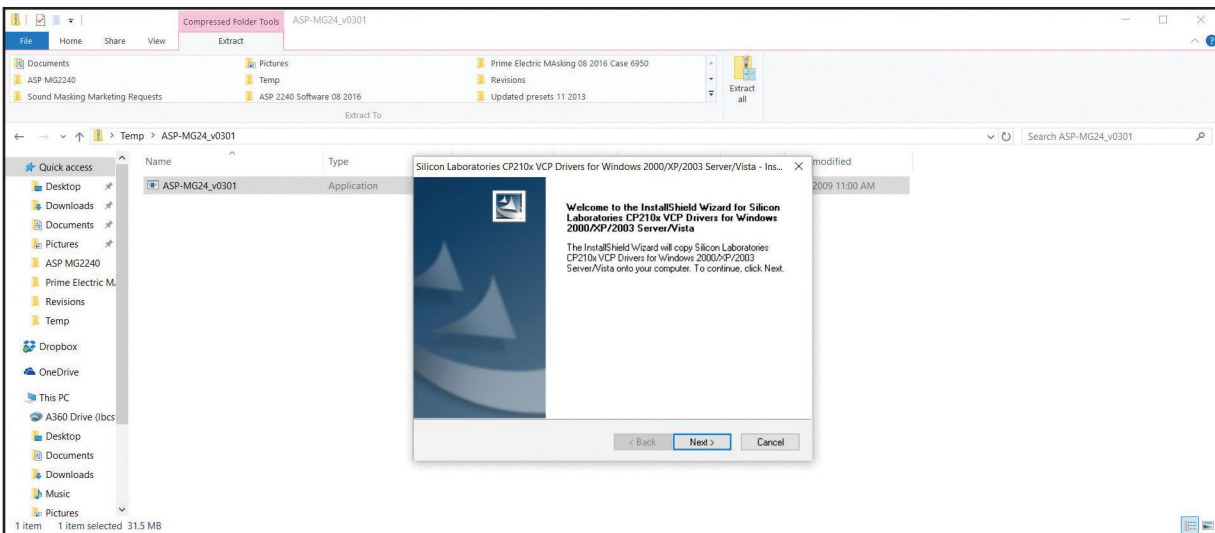
3. Follow the installation steps.
4. Make sure to click the check box that says "Launch the CP210x UCP Driver Installer". Failure to do this will result in a USB error when trying to connect to the device.



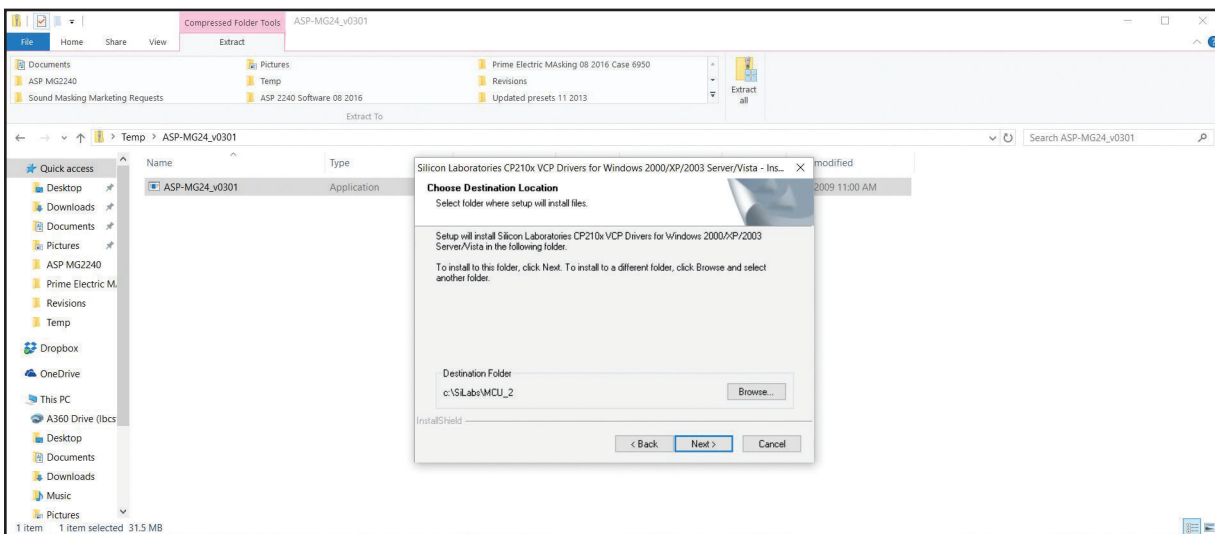
5. Click "Finish" to Install the USB Driver.



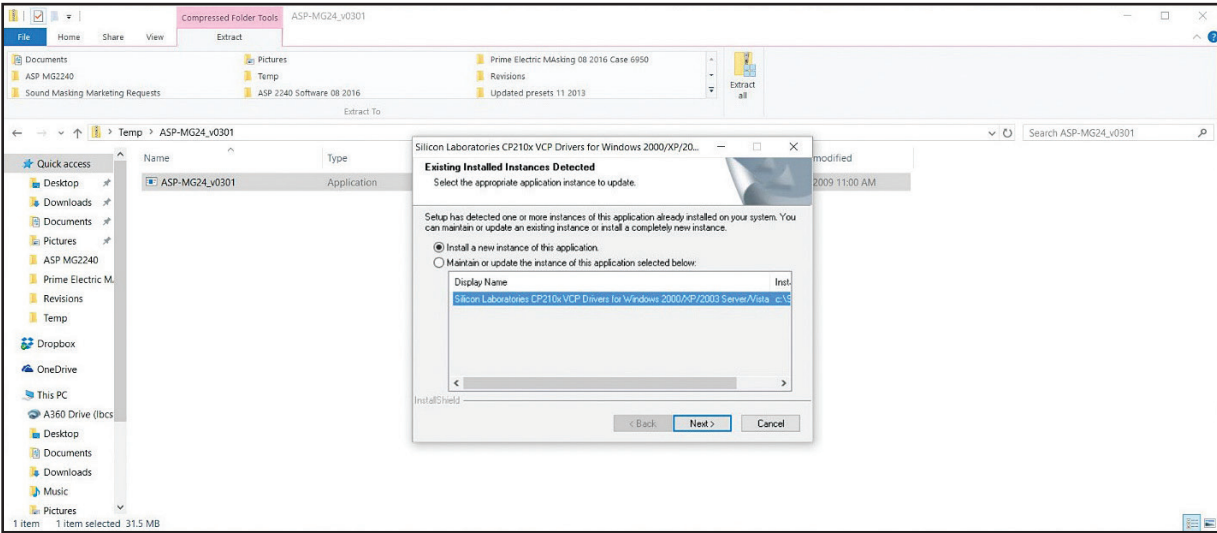
6. Click "Next".



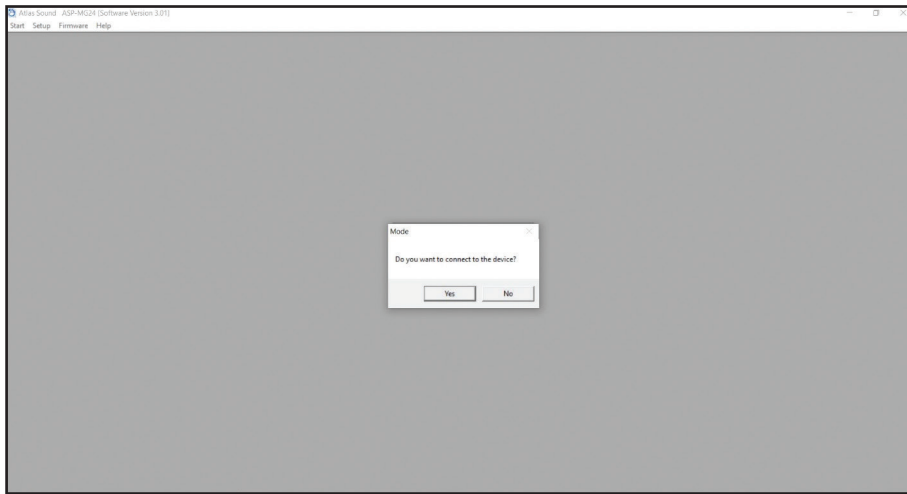
7. Click "Next".



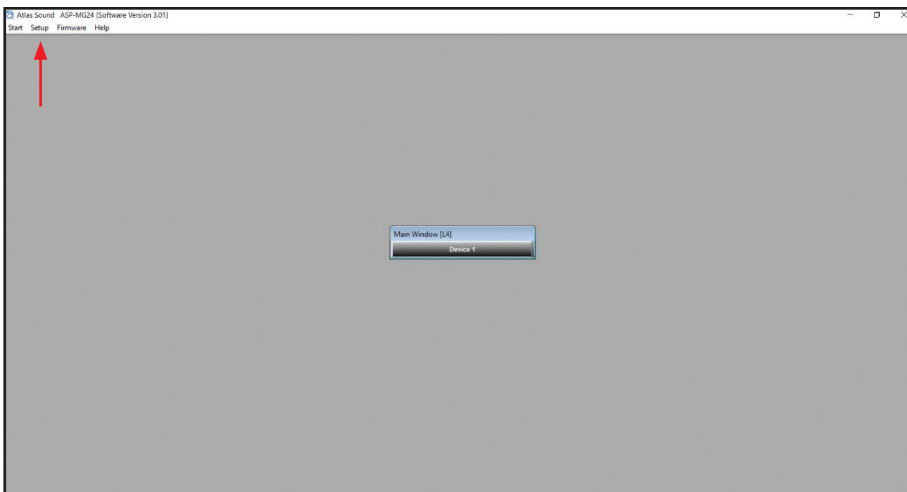
- If the USB Driver is being re-installed over an existing installation, the following window will open. Click "Next".



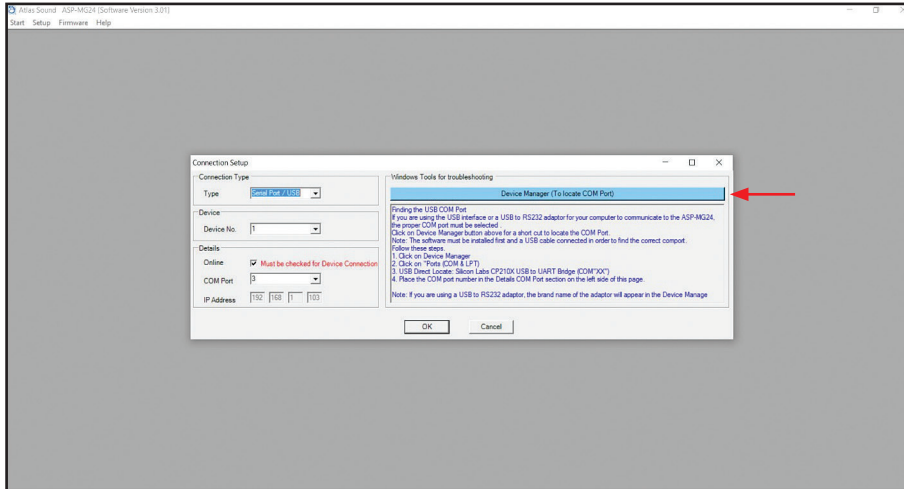
- When complete, go to the desktop and locate the AtlasIED icon labeled "ASP-MG24." Double click to start the control software. Connect the USB or RS-232 cables at this time.
- Click "No" to operate the software in desktop mode.



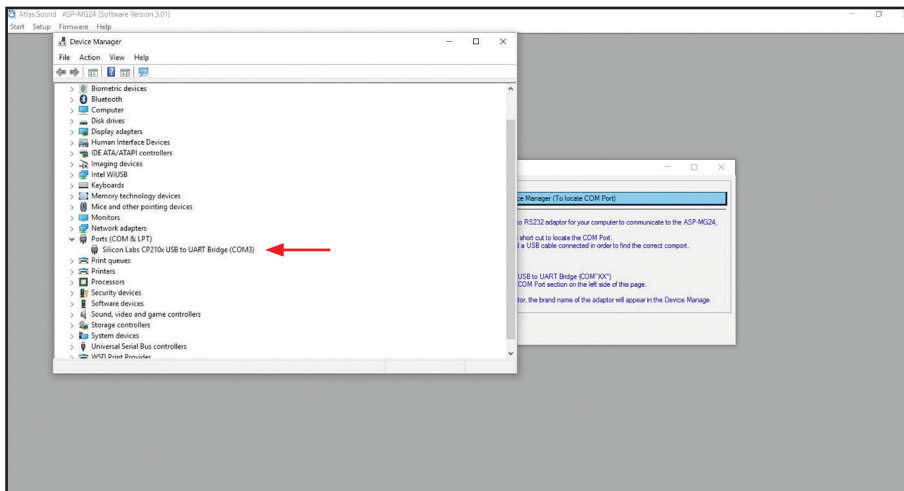
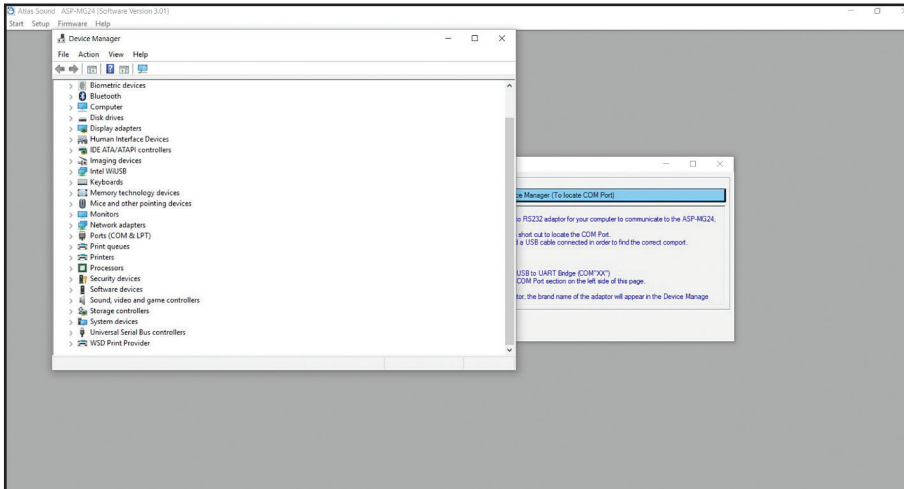
- Click on "Setup" then "Port Connection".



12. Click on the blue bar on the right side of the screen to locate the “Device Manager.”

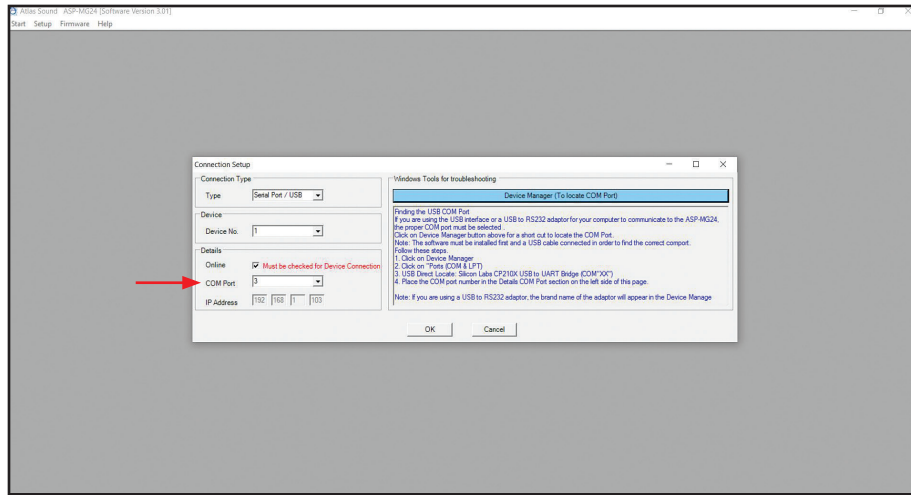


13. Under “Ports” click on the arrow to view the assigned Com Port.

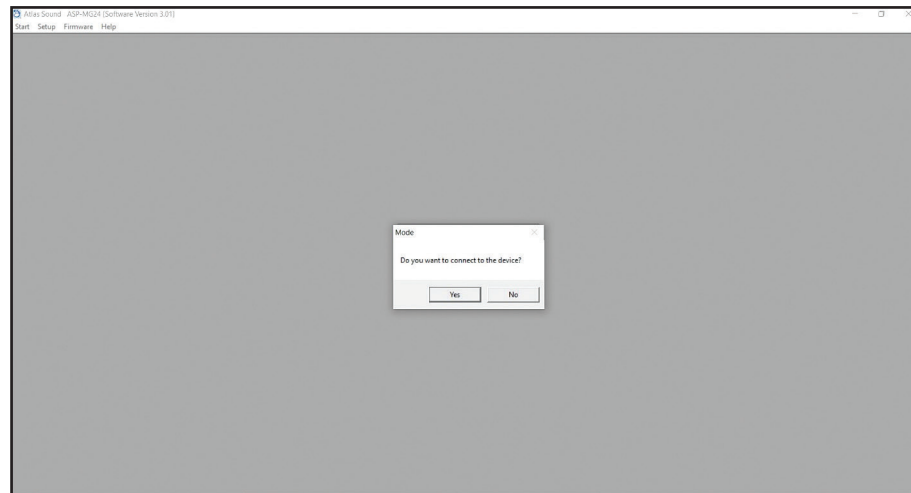


14. Make note of the Com Port number and then close the “Device Manager.” **Note:** If a connection isn't made via USB or RS-232, the Com port assignment will not be seen.

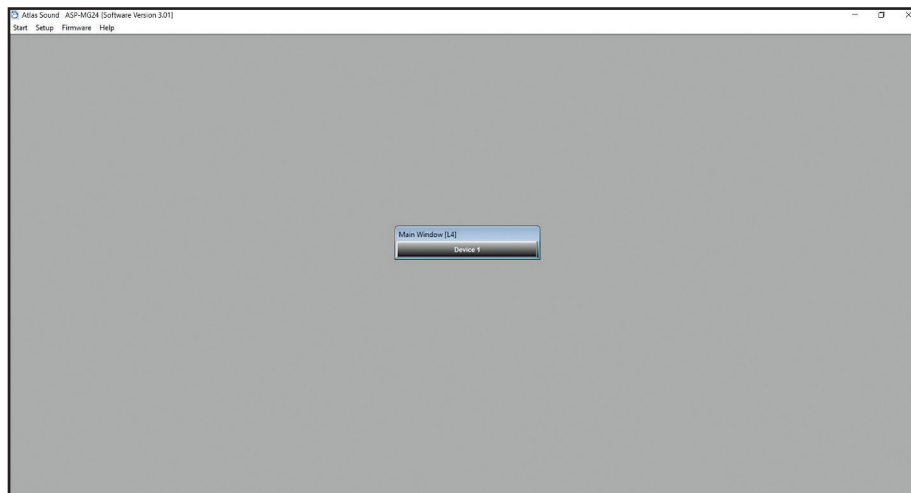
15. Now change the Com Port to the one written down in the previous step.
16. Click “OK” and then close out the program. Once closed, re-open the program.



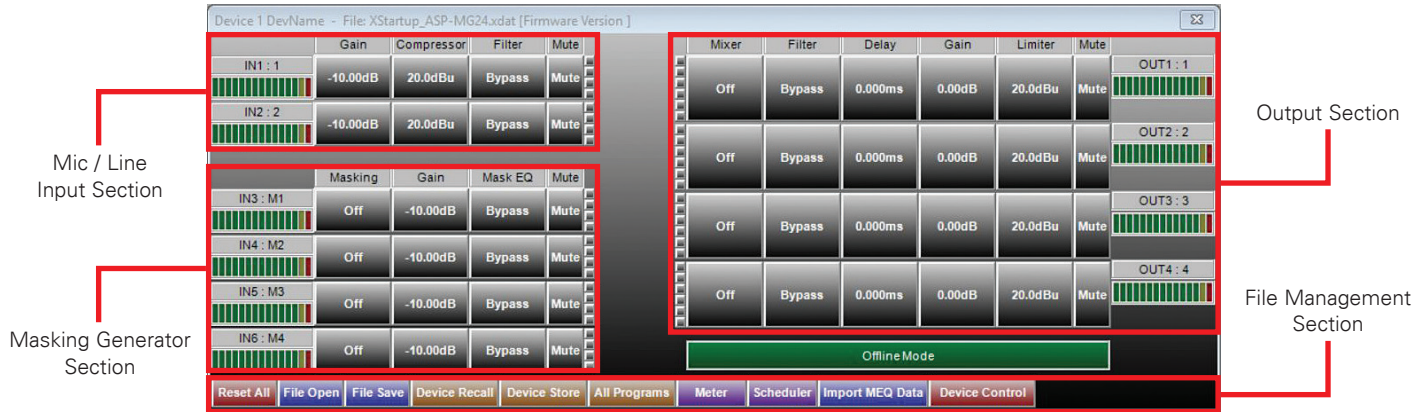
17. Click “Yes”.



18. Click on the “Device 1” bar to open the control software.

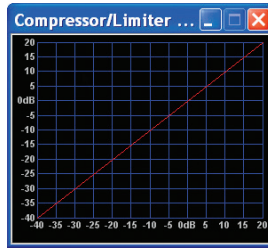
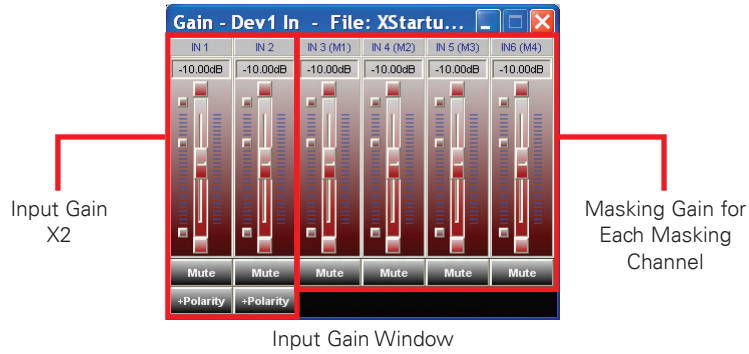


19. The software control is comprised of four main sections.

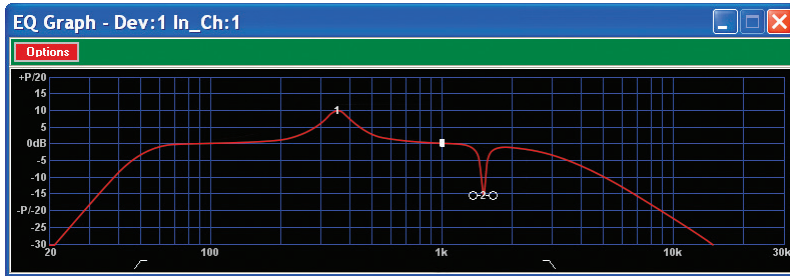


- **Mic / Line Input Section** – Adjust gain on any input, set the maximum input levels via the compressor / limiter, assign High and Low Cut filters and 8 parametric filter settings.
- **Masking Generator Section** – Select between white and pink noise, assign High and Low Cut filters, and fine tune the system via the 1/3 octave EQ.
- **Output Section** – Route and mix any or all inputs to an output, assign parametric filters, delay, set gain and signal limits.
- **File Management Section** – System files can be downloaded via email or the web. Files can be created without being connected to an ASP-MG24. Once files are created they can be saved to the ASP-MG24 and saved as a back-up to your computer. Presets saved on the device can also be recalled from the field. A systems status window also tells you if you are in sync mode or offline.

20. **Common Input Sub Windows** – Some of these windows are similar to the Masking and Output sections. **Note:** All windows can be moved to meet your viewing preference.



Input Compressor / Limiter Windows



Filter Veiving Window

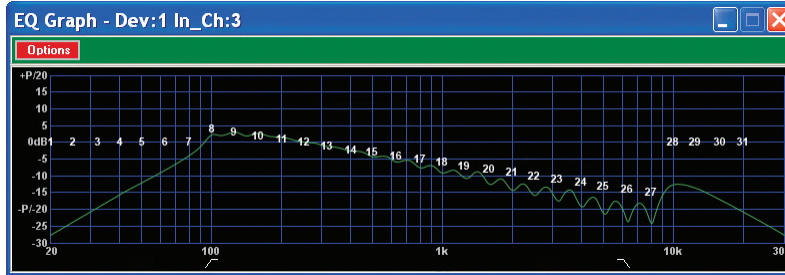


High and Low Cut Filter Window

Band	Type	EQ Level	Freq	BW
1	PEQ	-10.00dB	353Hz	0.64Oct
2	PEQ	-15.50dB	1512Hz	0.08Oct
3	PEQ	0.00dB	1000Hz	0.33Oct
4	PEQ	0.00dB	1000Hz	0.33Oct
5	PEQ	0.00dB	1000Hz	0.33Oct
6	PEQ	0.00dB	1000Hz	0.33Oct
7	PEQ	0.00dB	1000Hz	0.33Oct
8	PEQ	0.00dB	1000Hz	0.33Oct

Parametric Filter Window

21. **Masking Section** – There are four independent generators that are on random clock associators. Each generator has gain, High and Low cut filters, and 1/3 octave EQ points assigned. There is a power ramp up time delay that also can be set for bypassed. An optional advanced scheduler is also available.



Filter Viewing Window

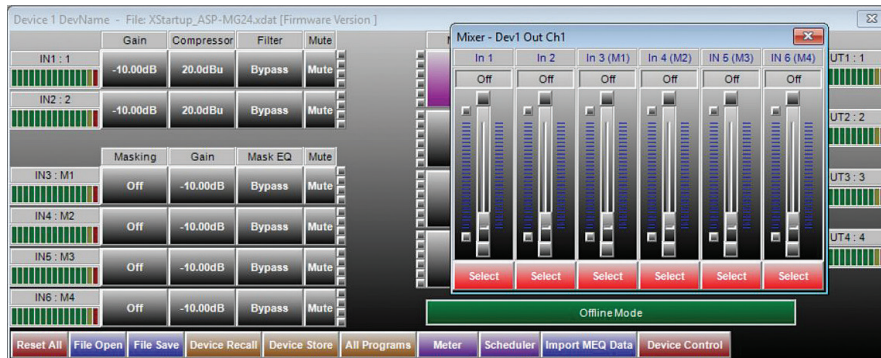
Lo-Cut	Type: Butterworth	Frequency: 100Hz	Slope: 12dB/Oct
Hi-Cut	Type: Butterworth	Frequency: 6000Hz	Slope: 12dB/Oct
Reset	<input type="button" value="▲"/> <input type="button" value="▼"/> <input type="button" value="▲"/> <input type="button" value="▼"/> <input type="button" value="▲"/> <input type="button" value="▼"/>		

High and Low Cut Window

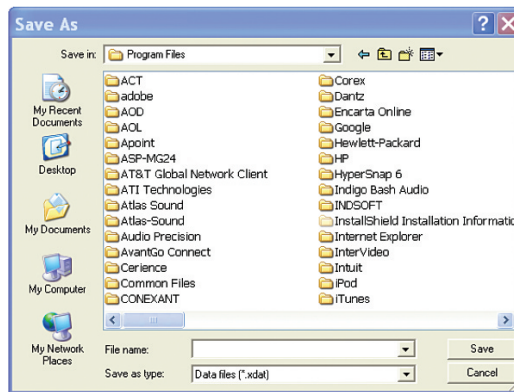
8 - 100Hz	4.00dB
9 - 125Hz	3.00dB
10 - 160Hz	2.00dB
11 - 200Hz	1.00dB
12 - 250Hz	0.00dB
13 - 315Hz	-1.00dB
14 - 400Hz	-2.00dB
15 - 500Hz	-3.00dB
16 - 630Hz	-4.00dB
17 - 800Hz	-5.00dB
18 - 1kHz	-6.00dB
19 - 1.25kHz	-7.00dB
20 - 1.6kHz	-8.00dB
21 - 2kHz	-9.00dB
22 - 2.5kHz	-10.00dB
23 - 3.15kHz	-11.00dB
24 - 4kHz	-12.00dB
25 - 5kHz	-13.00dB
26 - 6.3kHz	-14.00dB
27 - 8kHz	-15.00dB
Reset	<input type="button" value="▲"/> <input type="button" value="▼"/> <input type="button" value="▲"/> <input type="button" value="▼"/>

1/3 Octave Window

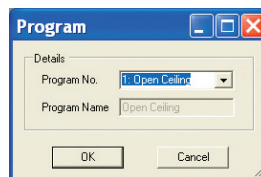
22. **Output Section** – This section consists of a mixer and signal router, filter section, delay, gain and a limiter section. **Note:** The mixer section has routing lines to indicate which inputs are assigned to that output. All incoming levels can be adjusted independently to all the required mix level at the output.



23. **File Recall and Store** – This section works like other Windows® file structure programs.



Program Files



Device Program Store and Recall

For more detailed information please refer to the ASP-MG24 owner's manual.