

DSP2210 / DSP2212

Quick Procedure for Updating the USB Driver

1. Once the Atlas Sound DSP Series software is installed, click the shortcut labeled DSP Soundmasking Control shown in Figure 1.



Figure 1

2. The software should open and auto find the unit, shown in Figure 2. If the software does not auto find the unit, then the USB driver may require updating.

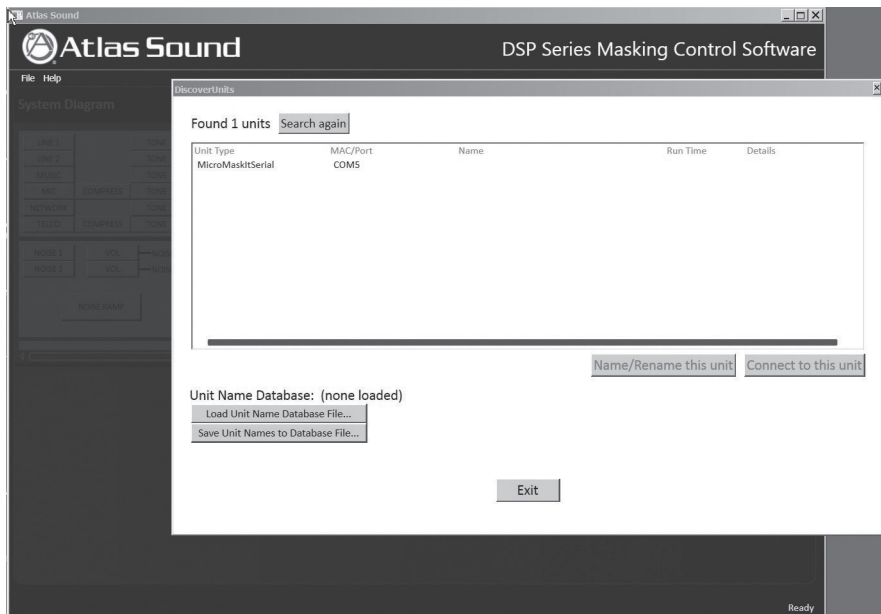


Figure 2

DSP2210 / DSP2212

Quick Procedure for Updating the USB Driver

3. If an error message occurs regarding updating the USB driver, follow these steps.
4. Click on "System" from the Control Panel screen.

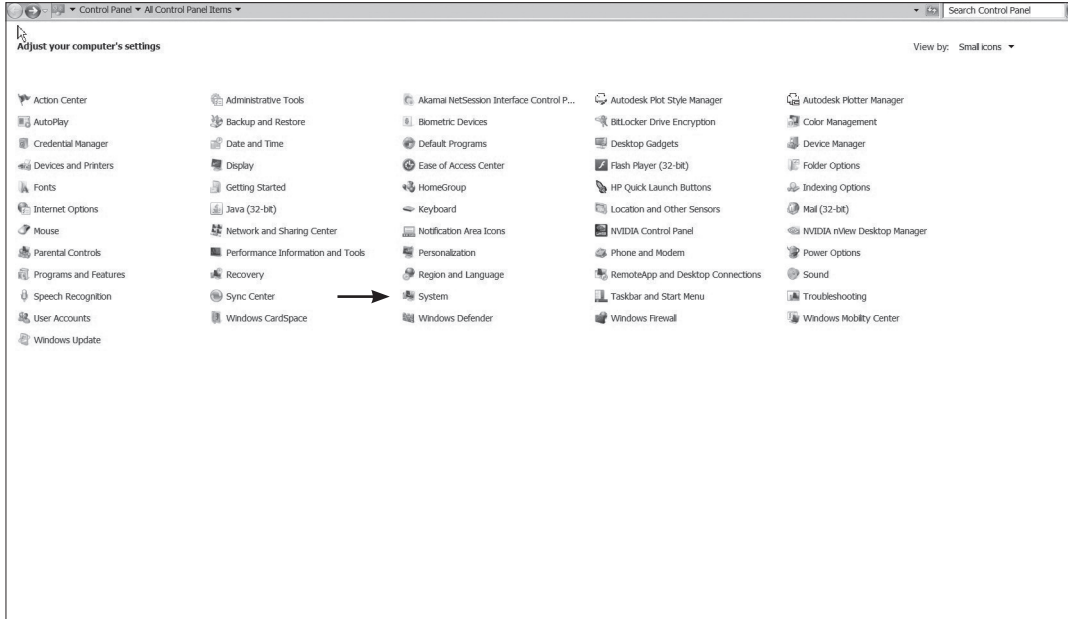


Figure 3

5. Locate the device manager on the computer in the Control Panel (Windows 7). Other versions of Windows may have a different screen than what is shown in Figure 4. What is important is to locate the device manager.
6. Click on the Device Manager link.

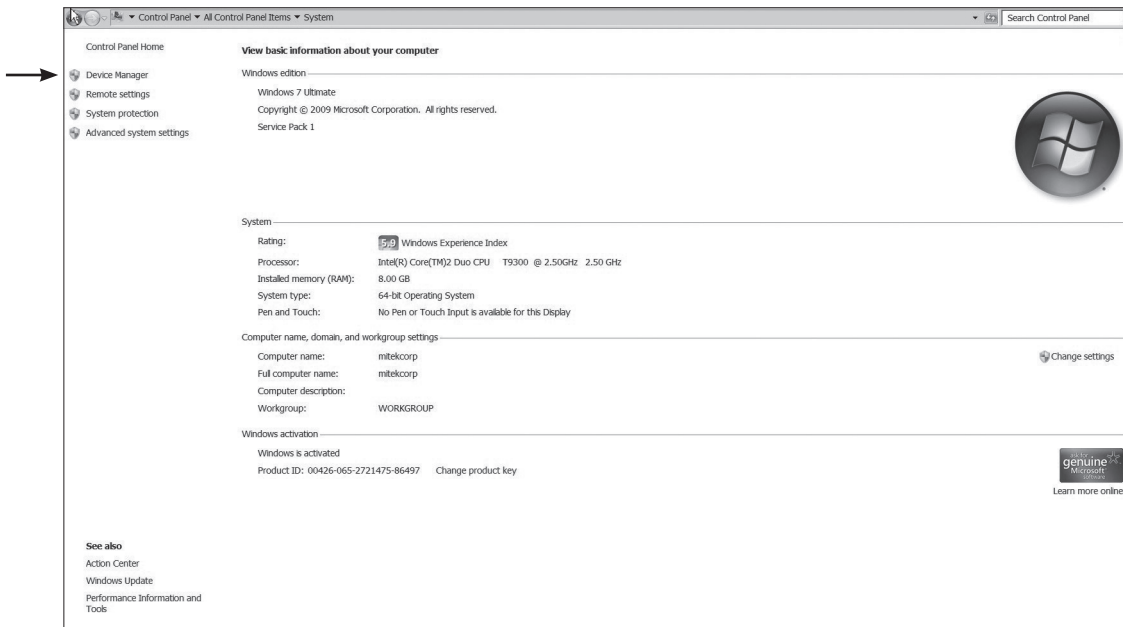


Figure 4

DSP2210 / DSP2212

Quick Procedure for Updating the USB Driver

- Click the "+" sign to expand the "Ports (COM & LPT)" section.

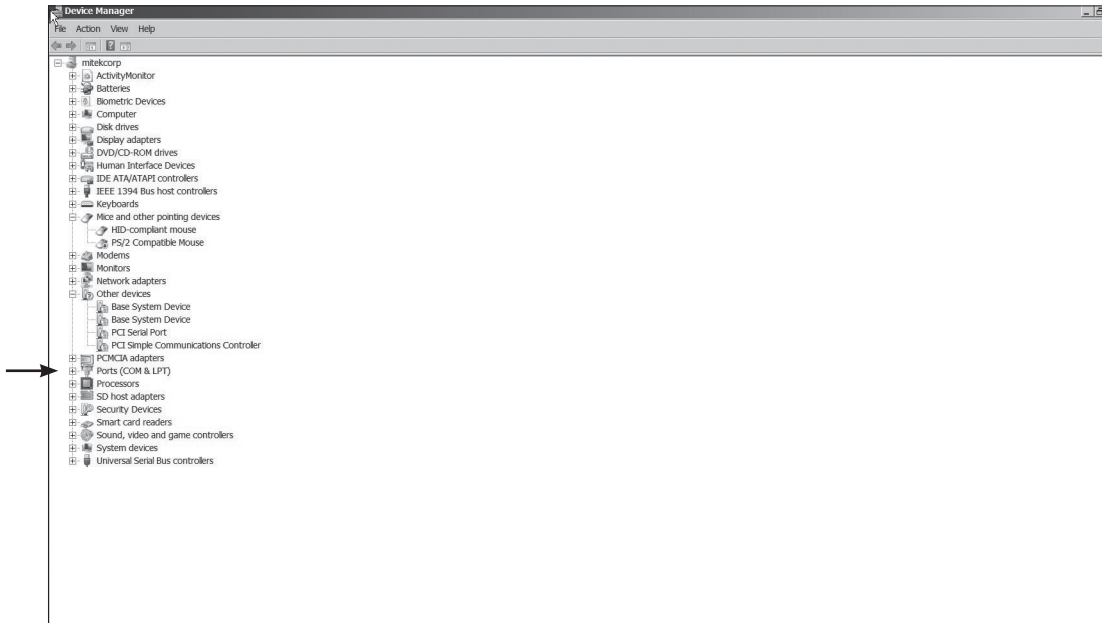


Figure 5

- Mouse over the "USB Serial Port (COMX)" and right click.

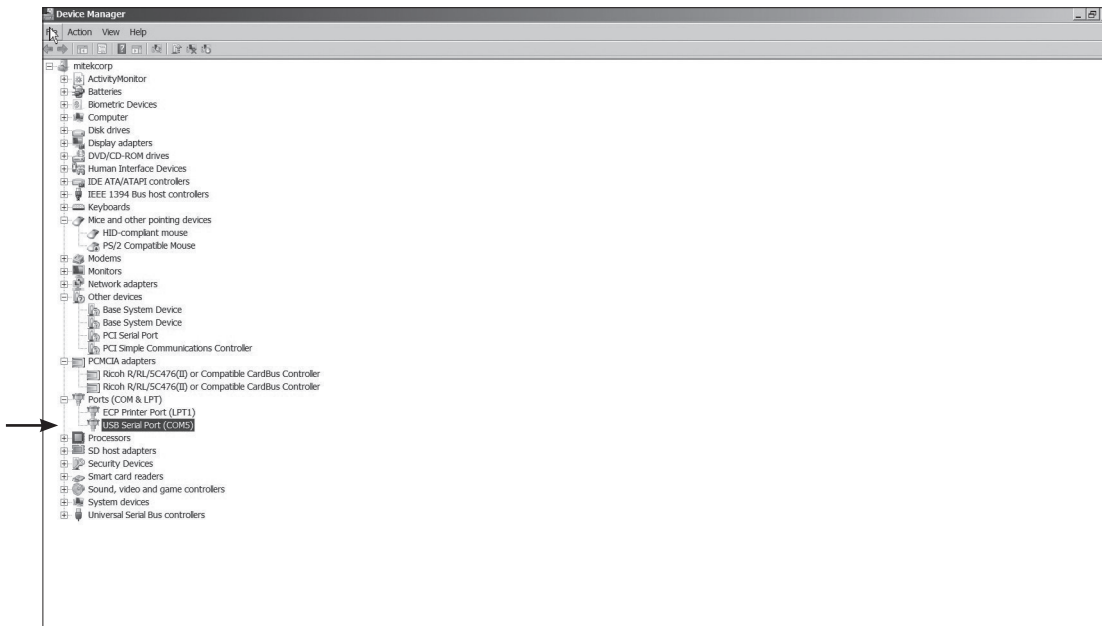


Figure 6

DSP2210 / DSP2212

Quick Procedure for Updating the USB Driver

9. Select "Search Automatically" and the PC will install the necessary update.

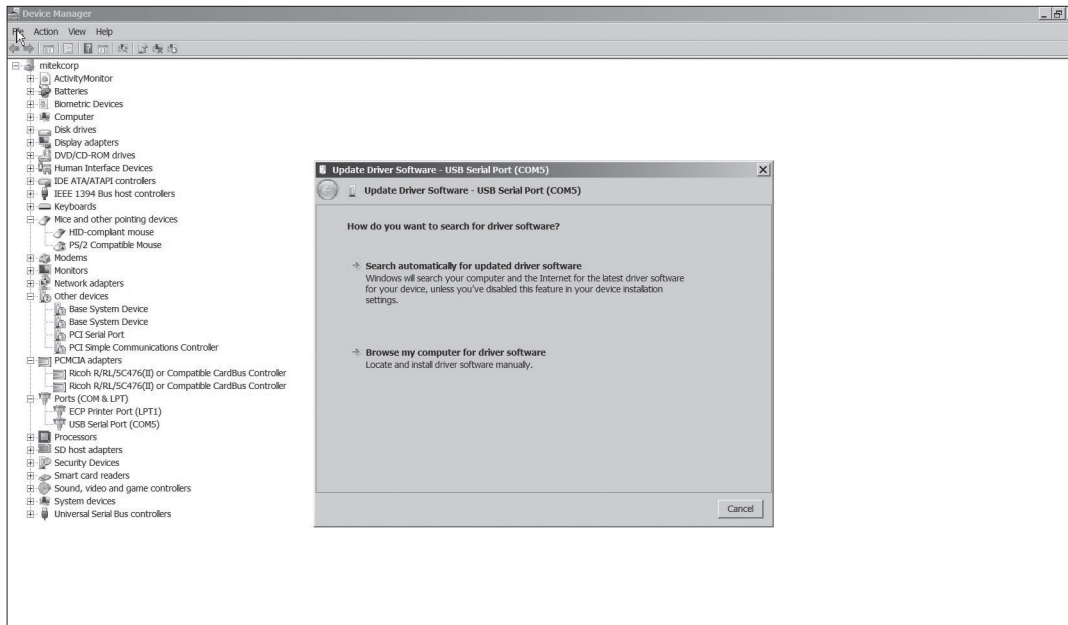


Figure 7

10. The PC may need to be restarted to complete the installation.